

**PROCESS
BOOK**

RESEARCH

ACCENTED CHARACTERS:

Small marks over, under, or through a letterform indicating specific punctuation or changes in stress

- Important in both written and spoken language – which results in it being important in typography
- These small yet significant letters indicate pronunciation and emphasis
- Clarifies meaning of a word. For example, divorce is an action while divorcée is the person who went through the divorce process

 Acute

 Grave

 Circumflex

 Tilde

 Umlau

 Cedilla

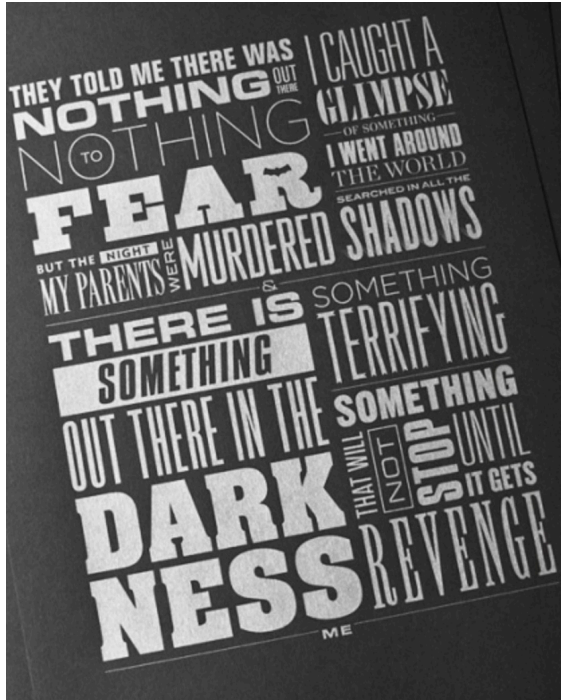
WEIGHT (OF TYPEFACES):

The lightness or heaviness of a typeface which is determined by the stroke thickness to the character height

- There have been attempts to standardize weight and proportion terminology for typefaces –none have stuck
- Some examples of common names: light, book, medium, demi bold, and black
- Adrian Frutiger tried establishing a mathematical weight and proportion system(Univers) that didn't stick around even with its logical system.

A
A
A
A
A
A

INSPIRATION



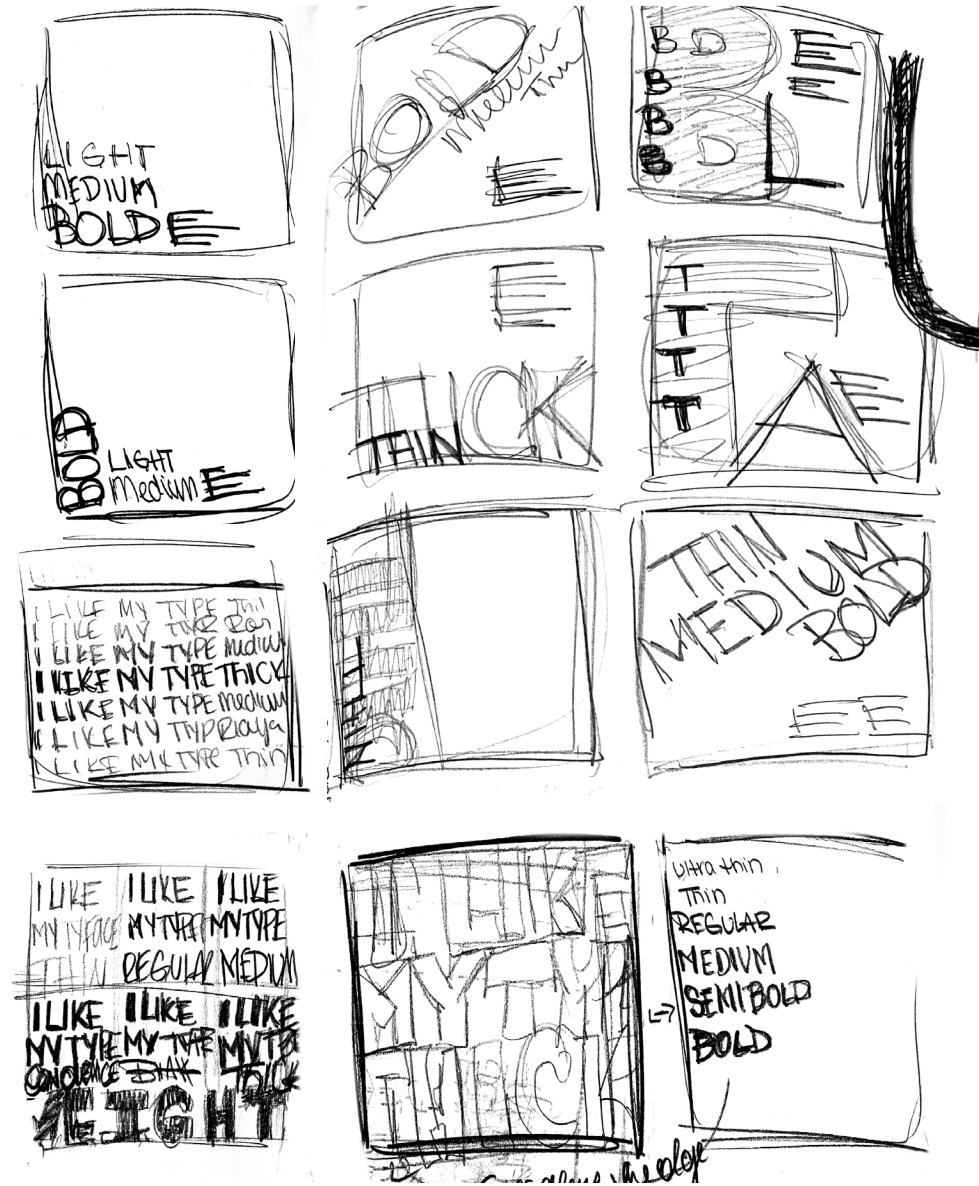
SKETCHES



ACCENTED CHARACTERS:

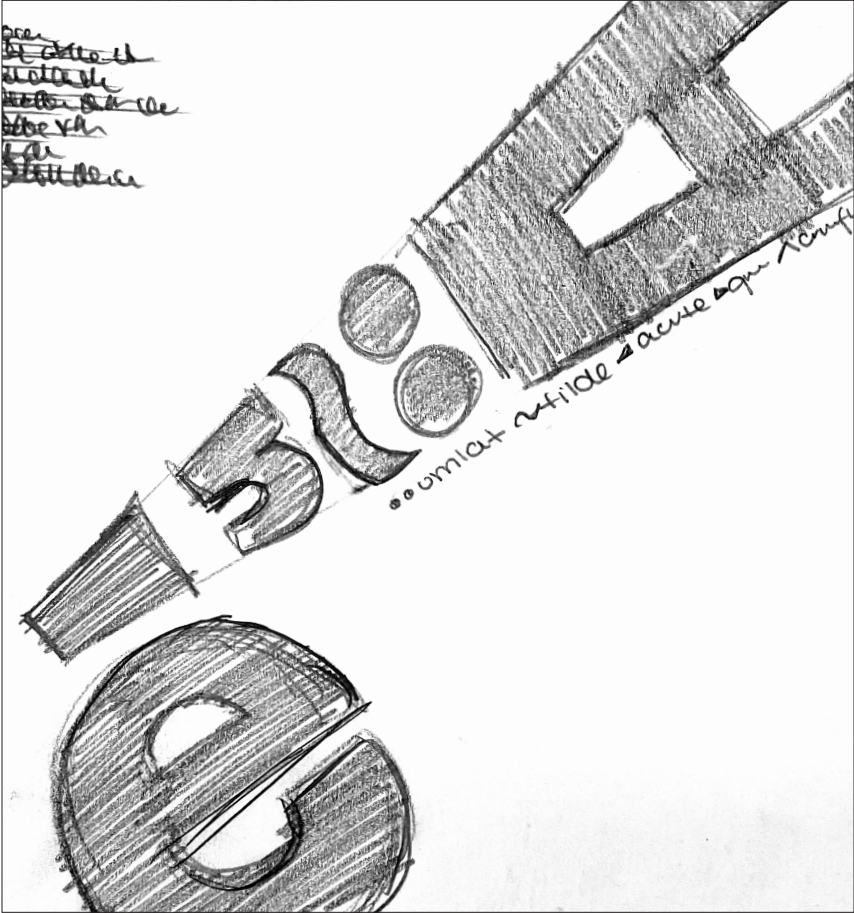
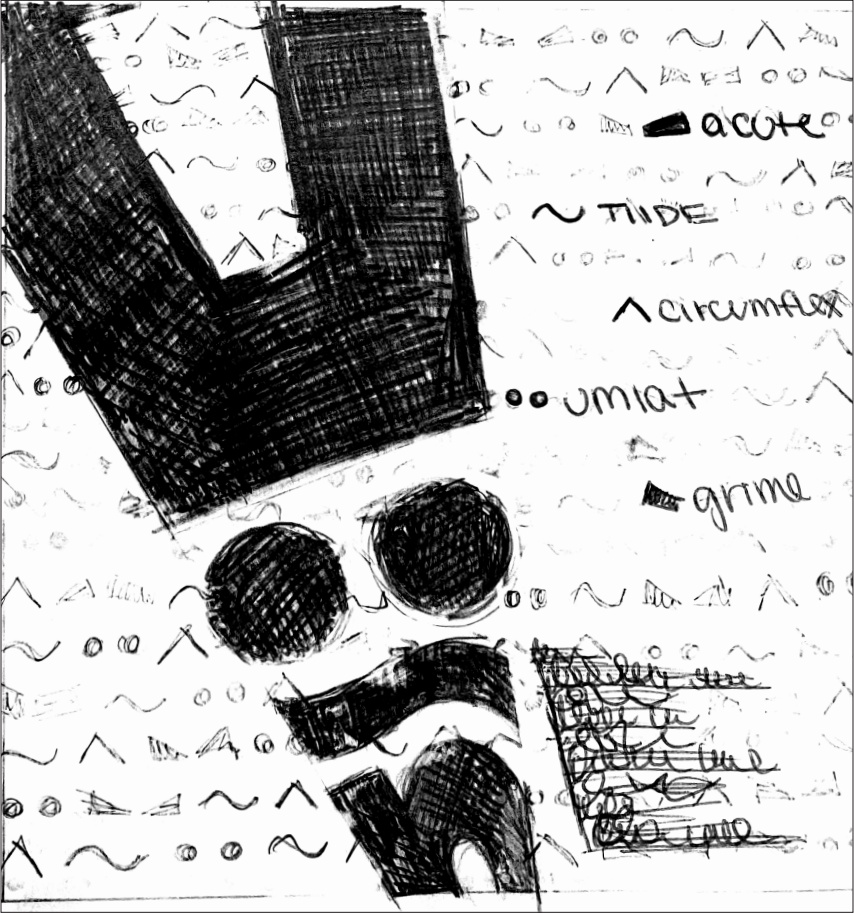


WEIGHT (OF TYPEFACES):

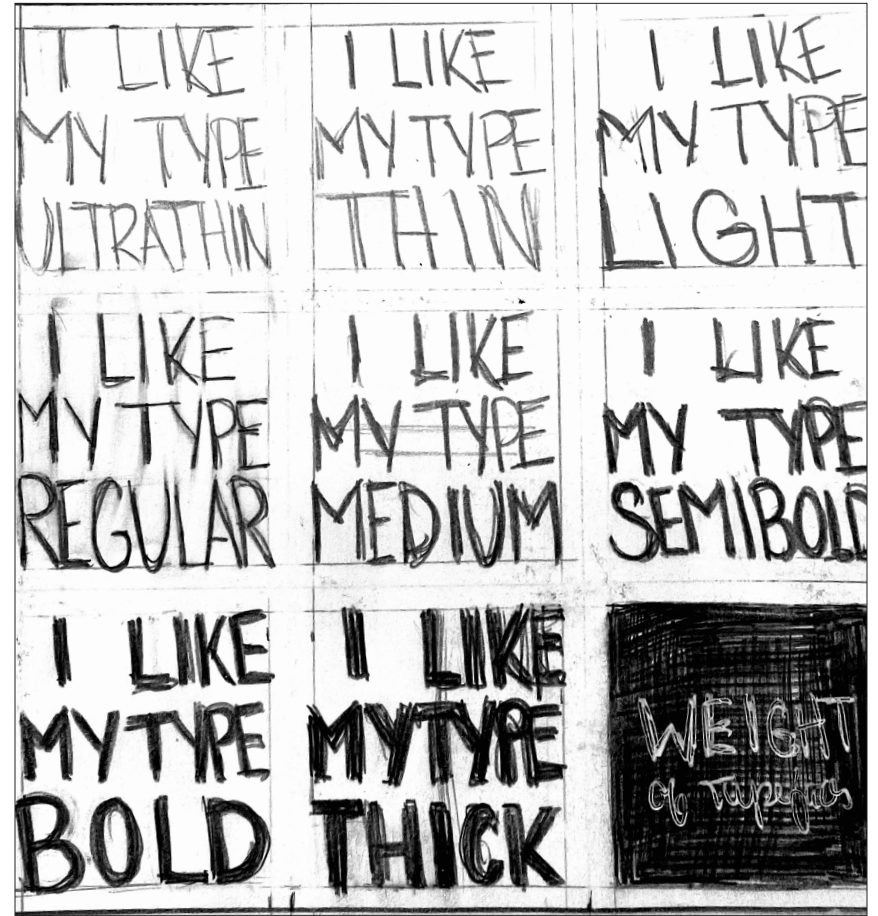
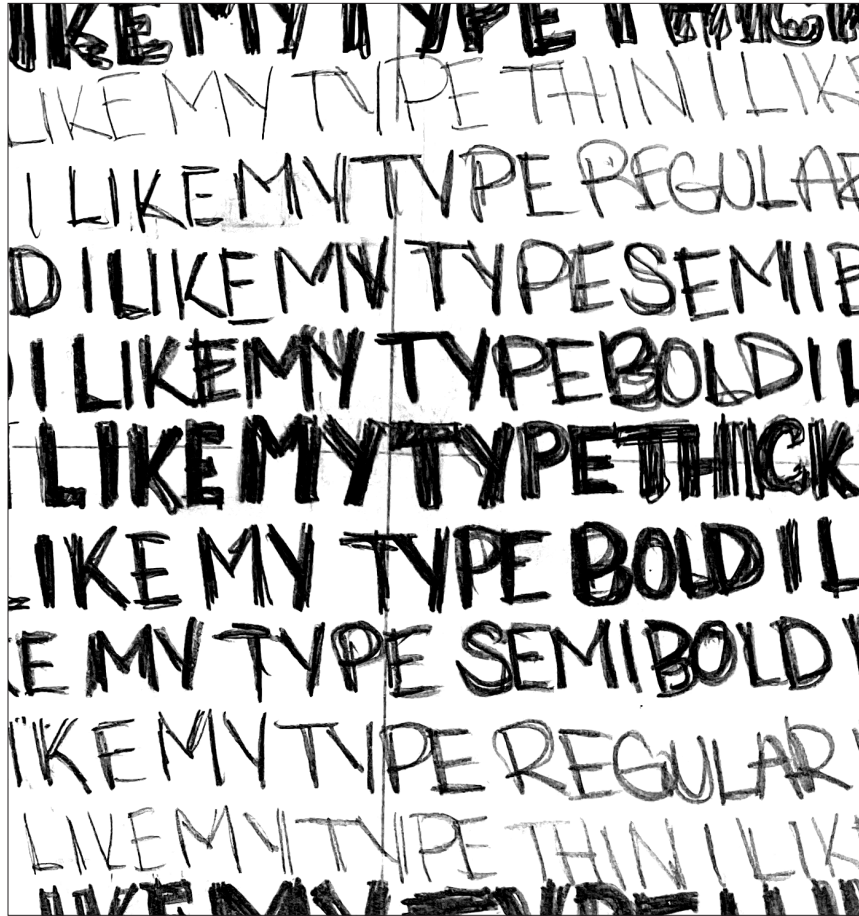


**FINAL
SKETCHES**

ACCENTED CHARACTERS:



WEIGHT (OF TYPEFACES):

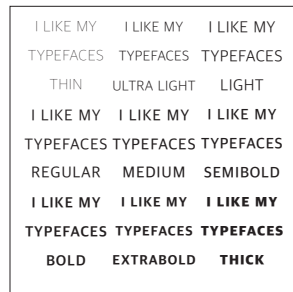
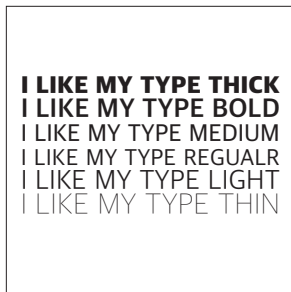
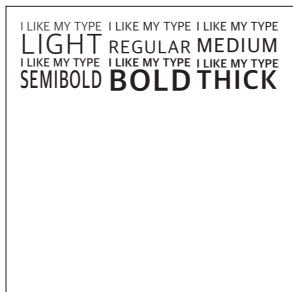
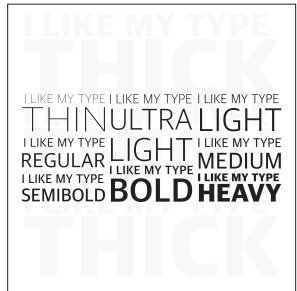
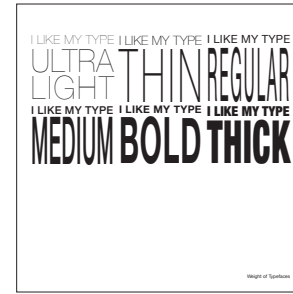
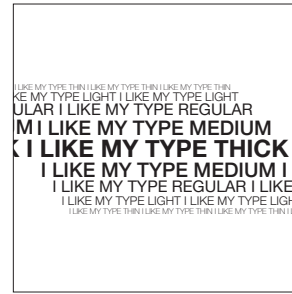


**DIGITAL
EXPERIMENTS**

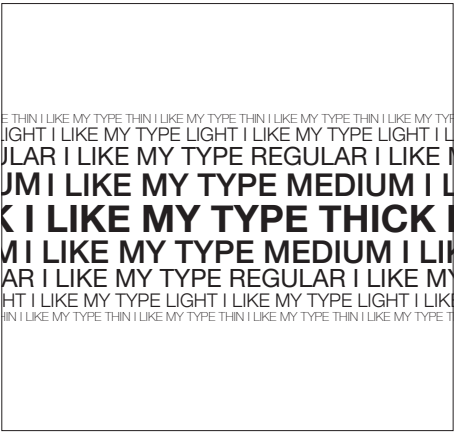
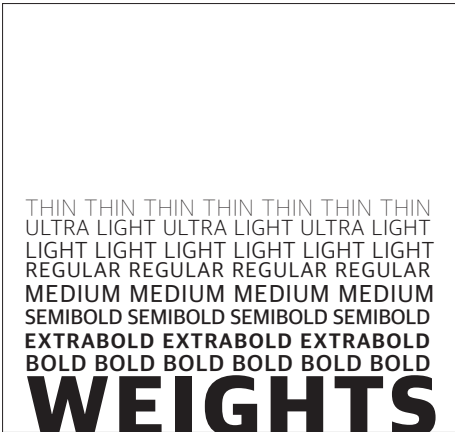
ACCENTED CHARACTERS:



WEIGHT (OF TYPEFACES):



WEIGHT (OF TYPEFACES):



**COLOR
EXPERIMENTS**

ACCENTED CHARACTERS:



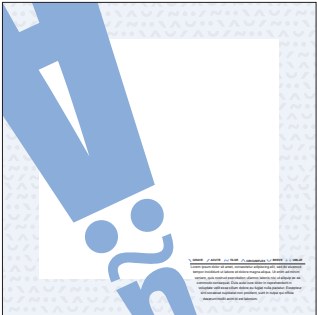
GRAVE / ACUTE ~ TILDE ^ CIRCUMFLEX ˇ BREVE • UMLAT

Lorem ipsum dolor sit amet, consectetur adipiscing elit, sed do eiusmod tempor incididunt ut labore et dolore magna aliqua. Ut enim ad minim veniam, quis nostrud exercitation ullamco laboris nisi ut aliquip ex ea commodo consequat. Duis aute irure dolor in reprehenderit in voluptate velit esse cillum dolore eu fugiat nulla pariatur. Excepteur sint occaecat cupidatat non proident, sunt in culpa qui officia deserunt mollit anim id est laborum.



GRAVE / ACUTE ~ TILDE ^ CIRCUMFLEX ˇ BREVE • UMLAT

Lorem ipsum dolor sit amet, consectetur adipiscing elit, sed do eiusmod tempor incididunt ut labore et dolore magna aliqua. Ut enim ad minim veniam, quis nostrud exercitation ullamco laboris nisi ut aliquip ex ea commodo consequat. Duis aute irure dolor in reprehenderit in voluptate velit esse cillum dolore eu fugiat nulla pariatur. Excepteur sint occaecat cupidatat non proident, sunt in culpa qui officia deserunt mollit anim id est laborum.



GRAVE / ACUTE ~ TILDE ^ CIRCUMFLEX ˇ BREVE • UMLAT

Lorem ipsum dolor sit amet, consectetur adipiscing elit, sed do eiusmod tempor incididunt ut labore et dolore magna aliqua. Ut enim ad minim veniam, quis nostrud exercitation ullamco laboris nisi ut aliquip ex ea commodo consequat. Duis aute irure dolor in reprehenderit in voluptate velit esse cillum dolore eu fugiat nulla pariatur. Excepteur sint occaecat cupidatat non proident, sunt in culpa qui officia deserunt mollit anim id est laborum.

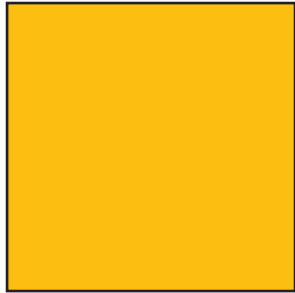


GRAVE / ACUTE ~ TILDE ^ CIRCUMFLEX ˇ BREVE • UMLAT

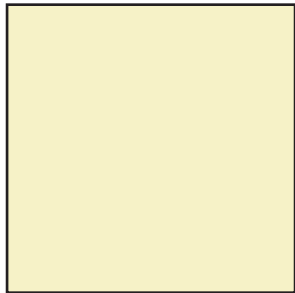
Lorem ipsum dolor sit amet, consectetur adipiscing elit, sed do eiusmod tempor incididunt ut labore et dolore magna aliqua. Ut enim ad minim veniam, quis nostrud exercitation ullamco laboris nisi ut aliquip ex ea commodo consequat. Duis aute irure dolor in reprehenderit in voluptate velit esse cillum dolore eu fugiat nulla pariatur. Excepteur sint occaecat cupidatat non proident, sunt in culpa qui officia deserunt mollit anim id est laborum.

FINAL COLORS AND FONTS:

ACCENTED CHARACTERS:



Pantone P 10-8 U
100% Tint
100% Opacity



Pantone P 1-12 U
100% Tint
54% Opacity

HELVETICA NEUE

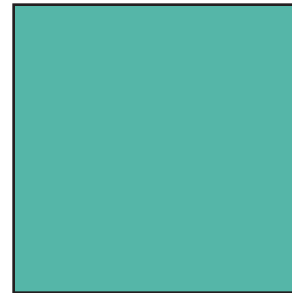
Aa Bb Cc Dd Ee Ff Gg Hh Ii Jj Kk Ll Mm
Nn Oo Pp Qq Rr Ss Tt Uu Vv Ww Xx Yy Zz

Regular **Bold**

WEIGHTS (OF TYPEFACES):



C=100 M=0 Y=60 K=80
100% Tint
100% Opacity



Pantone P 130-160 U
60% Tint
100% Opacity

APPLE SD GOTHIC NEO

Aa Bb Cc Dd Ee Ff Gg Hh Ii Jj Kk Ll Mm
Nn Oo Pp Qq Rr Ss Tt Uu Vv Ww Xx Yy Zz

THIN LIGHT REGULAR MEDIUM
SEMIBOLD EXTRABOLD HEAVY

SEMI-FINALS

ACCENTED CHARACTERS:

GRAVE / ACUTE ~ TILDE
CIRCUMFLEX BREVE • UMLAT

Accents are small marks over, under, or through a letterform indicating specific punctuation or changes in stress. This is important in both written and spoken language because these small yet significant letters clarify the meanings of words. For example, the word, divorce, is an action while divorcée is the person who went through the divorce process. Therefore, it is important to understand accents and how the letterforms effect words.

GRAVE / ACUTE ~ TILDE
CIRCUMFLEX BREVE • UMLAT

Accents are small marks over, under, or through a letterform indicating specific punctuation or changes in stress. This is important in both written and spoken language because these small yet significant letters clarify the meanings of words. For example, the word, divorce, is an action while divorcée is the person who went through the divorce process. Therefore, it is important to understand accents and how the letterforms effect words.

GRAVE / ACUTE
BREVE ~ TILDE
• UMLAT CIRCUMFLEX

Accents are small marks over, under, or through a letterform indicating specific punctuation or changes in stress. This is important in both written and spoken language because these small yet significant letters clarify the meanings of words. For example, the word, divorce, is an action while divorcée is the person who went through the divorce process. Therefore, it is important to understand accents and how the letterforms effect words.

GRAVE / ACUTE
BREVE ~ TILDE
• UMLAT CIRCUMFLEX

Accents are small marks over, under, or through a letterform indicating specific punctuation or changes in stress. This is important in both written and spoken language because these small yet significant letters clarify the meanings of words. For example, the word, divorce, is an action while divorcée is the person who went through the divorce process. Therefore, it is important to understand accents and how the letterforms effect words.

FINALS

ACCENTED CHARACTERS:



GRAVE / ACUTE
BREVE ~ TILDE
•• UMLAT ^ CIRCUMFLEX

Accents are small marks over, under, or through a letterform indicating specific punctuation or changes in stress. This is important in both written and spoken language because these small yet significant letters clarify the meanings of words. For example, the word, divorce, is an action while divorcée is the person who went through the divorce process. Therefore, it is important to understand accents and how the letterforms effect words.



GRAVE / ACUTE
BREVE ~ TILDE
•• UMLAT ^ CIRCUMFLEX

Accents are small marks over, under, or through a letterform indicating specific punctuation or changes in stress. This is important in both written and spoken language because these small yet significant letters clarify the meanings of words. For example, the word, divorce, is an action while divorcée is the person who went through the divorce process. Therefore, it is important to understand accents and how the letterforms effect words.

WEIGHT (OF TYPEFACES):

THIN	THIN	THIN	LIGHT	LIGHT	LIGHT	REGULAR	REGULAR	REGULAR
THIN	THIN	THIN	LIGHT	LIGHT	LIGHT	REGULAR	REGULAR	REGULAR
THIN	THIN	THIN	LIGHT	LIGHT	LIGHT	REGULAR	REGULAR	REGULAR
THIN	THIN	THIN	LIGHT	LIGHT	LIGHT	REGULAR	REGULAR	REGULAR
THIN	THIN	THIN	LIGHT	LIGHT	LIGHT	REGULAR	REGULAR	REGULAR
THIN	THIN	THIN	LIGHT	LIGHT	LIGHT	REGULAR	REGULAR	REGULAR
THICK	THICK	THICK				MEDIUM	MEDIUM	MEDIUM
THICK	THICK	THICK				MEDIUM	MEDIUM	MEDIUM
THICK	THICK	THICK				MEDIUM	MEDIUM	MEDIUM
THICK	THICK	THICK				MEDIUM	MEDIUM	MEDIUM
THICK	THICK	THICK				MEDIUM	MEDIUM	MEDIUM
THICK	THICK	THICK				MEDIUM	MEDIUM	MEDIUM
EXTRA	BOLD	BOLD	BOLD	BOLD	BOLD	SEMI	BOLD	SEMI
EXTRA	BOLD	BOLD	BOLD	BOLD	BOLD	SEMI	BOLD	SEMI
EXTRA	BOLD	BOLD	BOLD	BOLD	BOLD	SEMI	BOLD	SEMI
EXTRA	BOLD	BOLD	BOLD	BOLD	BOLD	SEMI	BOLD	SEMI
EXTRA	BOLD	BOLD	BOLD	BOLD	BOLD	SEMI	BOLD	SEMI
EXTRA	BOLD	BOLD	BOLD	BOLD	BOLD	SEMI	BOLD	SEMI

weights
the lightness or heaviness of a typeface

THIN	THIN	THIN	LIGHT	LIGHT	LIGHT	REGULAR	REGULAR	REGULAR
THIN	THIN	THIN	LIGHT	LIGHT	LIGHT	REGULAR	REGULAR	REGULAR
THIN	THIN	THIN	LIGHT	LIGHT	LIGHT	REGULAR	REGULAR	REGULAR
THIN	THIN	THIN	LIGHT	LIGHT	LIGHT	REGULAR	REGULAR	REGULAR
THIN	THIN	THIN	LIGHT	LIGHT	LIGHT	REGULAR	REGULAR	REGULAR
THIN	THIN	THIN	LIGHT	LIGHT	LIGHT	REGULAR	REGULAR	REGULAR
THICK	THICK	THICK				MEDIUM	MEDIUM	MEDIUM
THICK	THICK	THICK				MEDIUM	MEDIUM	MEDIUM
THICK	THICK	THICK				MEDIUM	MEDIUM	MEDIUM
THICK	THICK	THICK				MEDIUM	MEDIUM	MEDIUM
THICK	THICK	THICK				MEDIUM	MEDIUM	MEDIUM
THICK	THICK	THICK				MEDIUM	MEDIUM	MEDIUM
EXTRA	BOLD	BOLD	BOLD	BOLD	BOLD	SEMI	BOLD	SEMI
EXTRA	BOLD	BOLD	BOLD	BOLD	BOLD	SEMI	BOLD	SEMI
EXTRA	BOLD	BOLD	BOLD	BOLD	BOLD	SEMI	BOLD	SEMI
EXTRA	BOLD	BOLD	BOLD	BOLD	BOLD	SEMI	BOLD	SEMI
EXTRA	BOLD	BOLD	BOLD	BOLD	BOLD	SEMI	BOLD	SEMI
EXTRA	BOLD	BOLD	BOLD	BOLD	BOLD	SEMI	BOLD	SEMI

weights
the lightness or heaviness of a typeface

Typography II
Visual Definitions
Spring 2022
Taylor Smith
Brittyn DeWerth

